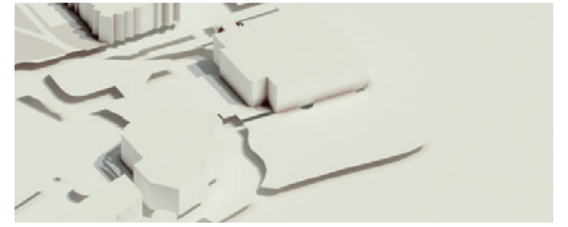




# TOP LUXURY

REAL ESTATE LEADERS



MODERN LUXURY SPOTLIGHT



## KIMBERLY CASEY

REAL ESTATE LEADER OF  
LUXURY NEW DEVELOPMENT

**KIMBERLY CASEY TEAM OF TTR  
SOTHEBY'S INTERNATIONAL REALTY  
SENIOR VICE PRESIDENT**

Kimberly Casey recently received the immense honor of being referred by the former CEO of Fannie Mae to his mentor, another former CEO of the company. "Considering their vast network, their choice to recommend me was a privilege and a profound endorsement of our team's dedication and expertise. It was a reminder of the reputation we've built and the trust we've earned in handling clients with the utmost professionalism and integrity," says Kimberly.

Kimberly Casey is consistently ranked in the top 1% of all agents nationwide and is passionate about assisting her clients in making smart financial decisions. With a background in international finance and having achieved her MBA, this third-generation Washingtonian has a data-driven approach and strong negotiation skills that produce successful results for her clients.

This Luxury Industry Leader regularly helps high-profile clients find and achieve their dream homes in the DC area. From tech founders to government officials to anyone and everyone in between, Kimberly's reputation for discretion and tenacity has led her to work with the nation's elite.

With an eye for innovation and a growth mindset, Kimberly works with Ryan Serhant as a coach to improve her business and learn the best tools to market her properties to get the most exposure globally.

Kimberly is passionate about new construction and is elated to be working on launching The Mayfair, 22 breathtaking residences in Logan Circle. She also has 16 new construction homes her team is preparing for launch in Cleveland Park, Kalorama, Georgetown, Glover Park, Logan, Alexandria and more.

In Kimberly's free time, she is involved in many local charities and runs Club Lady Boss, a networking group of local women entrepreneurs who support one another. "Empowered women empower women," says Kimberly.

5101 Wisconsin Avenue NW, Suite 100,  
Washington, DC 20016

202.361.3228, [kimberlycaseyteam.com](http://kimberlycaseyteam.com)  
[kcasey@ttrsir.com](mailto:kcasey@ttrsir.com), [@kimberlycaseyteam](https://www.instagram.com/kimberlycaseyteam)

PHOTOGRAPHY BY KIMBERLY CASEY REALTY